

Technical Bulletin

Product Information: Riello photocells

Change to photodiodes

Due to legislation governing the scrapping of electrical goods, our Greenstar ErP+ oil boilers are now fitted with a photodiode rather than a photocell. Riello photocell spare parts that are used on Pre ErP+ Worcester oil boilers will be phased out and replaced with photodiodes.

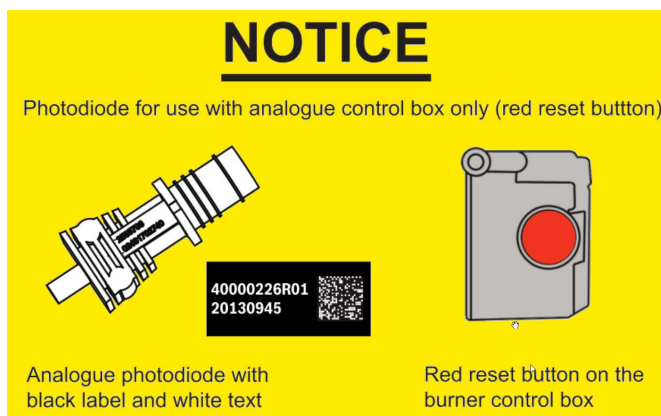
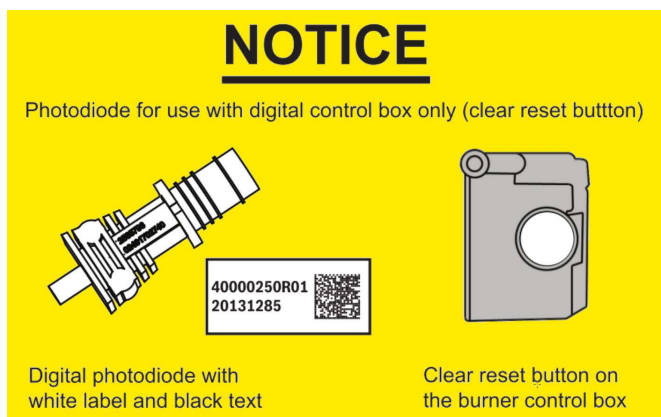
The photocells that are currently used across our range of pre ErP+ Greenstar oil boilers, which use Riello burners, will be replaced by 4 photodiodes.

It is important that the correct photodiode is selected for the control box fitted to the burner, as fitting the incorrect part will cause the burner to lock-out. Please reference the list opposite.

Riello burners that are fitted with a **Digital control box** will use either photodiode **8-716-119-635** or **8-716-119-713**.

Riello burners that are fitted with an **Analogue control box** will use photodiode **8-716-119-605** or **8-716-119-409**

A warning label similar to the ones shown below will be attached to the spare part carton to assist with identification of compatible control boxes.



Appliance	Control Box	Old Photocell	Replacement Photodiode
7-716-100-095	Digital	8-716-109-193-0	8-716-119-635
7-716-100-097	Digital	8-716-109-193-0	8-716-119-635
7-716-100-098	Digital	8-716-109-193-0	8-716-119-635
7-716-100-101	Digital	8-716-109-193-0	8-716-119-635
7-716-100-117	Digital	8-716-109-193-0	8-716-119-635
7-716-100-118	Digital	8-716-109-193-0	8-716-119-635
7-716-100-124	Digital	8-716-109-193-0	8-716-119-635
7-716-100-125	Digital	8-716-109-193-0	8-716-119-635
7-716-100-129	Digital	8-716-109-193-0	8-716-119-635
7-716-100-130	Digital	8-716-109-193-0	8-716-119-635
7-716-100-131	Digital	8-716-109-193-0	8-716-119-635
7-716-100-138	Digital	8-716-109-193-0	8-716-119-635
7-716-100-139	Digital	8-716-109-193-0	8-716-119-635
7-716-100-140	Digital	8-716-109-193-0	8-716-119-635
7-731-600-131	Digital	8-716-109-193-0	8-716-119-635
7-731-600-132	Digital	8-716-109-193-0	8-716-119-635
7-731-600-133	Digital	8-716-109-193-0	8-716-119-635
7-731-600-134	Digital	8-716-109-193-0	8-716-119-635
7-731-600-047	Digital	8-716-109-193-0	8-716-119-635
7-731-600-048	Digital	8-716-109-193-0	8-716-119-635
7-731-600-049	Digital	8-716-109-193-0	8-716-119-635
7-731-600-050	Digital	8-716-109-193-0	8-716-119-635
7-731-600-052	Digital	8-716-114-981-0	8-716-119-713
7-731-600-051	Digital	8-716-114-981-0	8-716-119-713
7-716-100-099	Analogue	8-716-114-981-0	8-716-119-409
7-716-100-105	Analogue	8-716-114-981-0	8-716-119-409
7-716-100-106	Analogue	8-716-114-981-0	8-716-119-409
7-716-100-107	Analogue	8-716-114-981-0	8-716-119-409
7-716-100-108	Analogue	8-716-114-981-0	8-716-119-409
7-716-100-109	Analogue	8-716-114-981-0	8-716-119-409
7-716-100-110	Analogue	8-716-114-981-0	8-716-119-409
7-716-100-111	Analogue	8-716-114-981-0	8-716-119-409
7-716-100-112	Analogue	8-716-114-981-0	8-716-119-409
7-716-100-113	Analogue	8-716-114-981-0	8-716-119-409
7-716-100-114	Analogue	8-716-114-981-0	8-716-119-409
7-716-100-115	Analogue	8-716-114-981-0	8-716-119-409
7-716-100-116	Analogue	8-716-114-981-0	8-716-119-409
7-716-100-119	Analogue	8-716-114-981-0	8-716-119-409
7-716-100-121	Analogue	8-716-114-981-0	8-716-119-409
7-716-100-123	Analogue	8-716-114-981-0	8-716-119-409
7-716-100-126	Analogue	8-716-114-981-0	8-716-119-409
7-716-100-127	Analogue	8-716-114-981-0	8-716-119-409
7-716-100-128	Analogue	8-716-114-981-0	8-716-119-409

Any Pre ErP+ Worcester Greenstar Oil boiler, fitted with a Riello RDB burner that is not on this list will require the Analogue photodiode (8-716-119-605).

If either an 8-716-119-409 or 8-716-119-713 photodiode is ordered, you will still receive an 8-716-114-981-0 photocell until stock is exhausted.

Whilst it is always our intention to fully assist, it is essential to recognise that all information given by the company in response to an enquiry of any nature is provided in good faith and based upon the information provided with the enquiry. We recommend that advice should always be checked with your installer or contract partner. Consequently, the company cannot be held responsible for any liability relating to the use or repetition of such information or part thereof. In addition, whilst making every reasonable effort to monitor the performance and quality of our supply, installation and service network, we do not accept responsibility for the workmanship or operation of any third party company that the company may have promoted either in conversation, e-mail, or other communication. Similarly, the views and opinions expressed in communication with individuals within the company may not reflect that of the business as a whole.

You can find this, and all issued technical bulletins on the Worcester website at: www.worcester-bosch.co.uk/tb or www.worcester-bosch.ie/tb